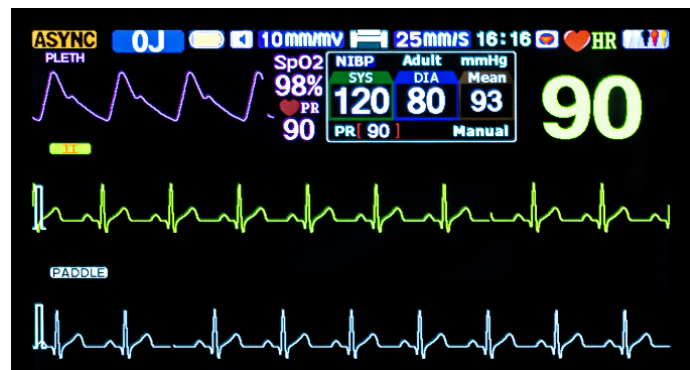


VD-8000C Defi-Monitor



Technical specifications

Specification

■ Display

- Screen Type: High-resolution display, TFT colour display
- Screen Size: 7 inches (17.7cm) diagonally
- Sweep Speed: 12.5/25/50mm/sec
- Information: Heart Rate, Nibp, SpO2, Temp, Delivered Energy
- Resolution: 800X480

■ ECG

- Patient Connection: 3-lead ECG cable, or 5-lead ECG cable, paddles.
- Lead Selection: Displayed on monitor, paddles, I, II, III, AVR, AVL, AVF, V.
- ECG Size: 2.5, 5, 10, 20, 30 mm/mV display on monitor.
- Heart Rate: 20-350BPM.
- Protection: With stand 4000vAc/50Hz voltage in isolation and work against electrosurgical knife and defibrillation

■ NIBP

- Working Mode: Manual/Automatic
- Method: Automatic oscillation
- Cuff type: standard Adult; optional Pediatric/Neonatal

■ Temp.

- Measurement range 0~50℃
- Resolution 0.1℃

■ Pulse Oximetry (Spo2)

- Display : Spo2 value, waveform, Pulse
- Range: 0~99%for adult, pediatric and neonatal patients
- Probe : Standard adult finger clip
- Optional pediatric Y-type clip and neonatal wrap

■ Defibrillator

- Waveform: Biphasic
- Defibrillator type: Manual External Synchronous/Asynchronous Defibrillation.
- Charge Time: Less than 10 seconds to 360 Joules
- Energy Display: Monitor display indicates both selected and delivered energy.
- Charge Prompt Type: Voice and visual prompts.
- Energy Selection: Selectable at 0, 3, 5, 7, 10, 20, 30, 50, 100, 200, 300, 360 joules
- Standard Adult/Pediatric Paddles: Reusable external adult paddles (pediatric paddles integrated)

■ Battery Description

- Standard Type: Li-ion battery Li1104c 11.1Vdc 4000mAh X2
- Standard Capacity: Up to 10 hours ECG monitoring or 60 full-energy discharges.
- Low Battery Indicator: Flashing low battery icon on display and Bat Indicator on the panel of defibrillator be on
- Recharge Rate: 80% in 3 hours. 100% in 5 hours.

■ Built-in Recorder

- Paper: 50mm thermal.
- Printing Method: High-resolution, thermal print head.
- Record date, time, sweep speed, waveform gain, heart rate, energy (joule) and ECG waveform
- Print mode
 - ☐ HR exceed limits alarm recording
 - ☐ Auto timed recording
 - ☐ Real-Time Recording
 - ☐ Defibrillation discharge trigger recording

■ Power

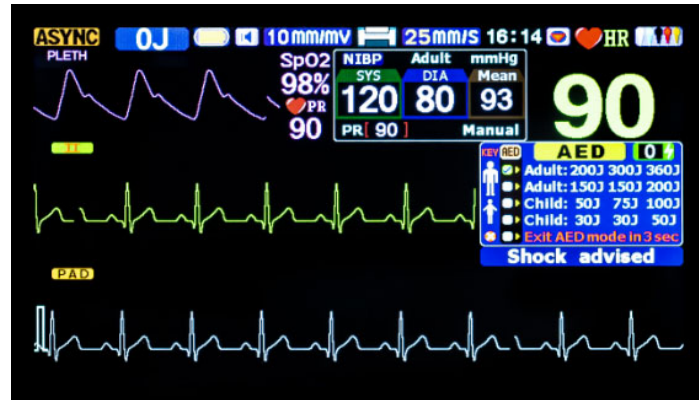
- AC-DC dual-use: Use the batteries, AC100V~240V, 50/60 Hz.
- Vehicle Voltage(Optional): DC 12V

■ **Main unit:**

- Portable
- Maximum power 600W
- Dimensions:L320xW205xH410
- Weight:7.5kg

■ **AED (Optional)**

- Voice prompts and screen prompts.
- Energy Programmable Sequence:
 - 200,300,360 Joules;
 - 150,150,200 Joules;
 - 50, 75, 100 Joules;
 - 30, 30, 50 Joules;



- Discharge Control: Control on device front panel.

