

# VD-8000D Defi-Monitor



## Technical specifications

### Specification

#### ■ Display

- Screen Type: High-resolution display, TFT colour display
- Screen Size: 7 inches (17.7cm) diagonally
- Sweep Speed: 12.5/25/50mm/sec
- Information: Heart Rate, Lead, Alarm On/Off, Delivered Energy
- Resolution: 800X480

#### ■ ECG

- Patient Connection: 3-lead ECG cable, or 5-lead ECG cable, paddles.
- Lead Selection: Displayed on monitor, paddles, I, II, III, AVR, AVL, AVF, V.
- ECG Size: 2.5, 5, 10, 20, 30 mm/mV display on monitor.
- Heart Rate: 20-350BPM.
- Protection: With stand 4000VAc/50Hz voltage in isolation and work against electrosurgical knife and defibrillation

#### ■ Defibrillator

- Waveform: Biphasic
- Defibrillator type: Manual External Synchronous/Asynchronous Defibrillation.
- Charge Time: Less than 10 seconds to 360 Joules
- Energy Display: Monitor display indicates both selected and delivered energy.
- Charge Prompt Type: Voice and visual prompts.



- Energy Selection: Selectable at 0, 3, 5, 7, 10, 20, 30, 50, 100, 200, 300, 360 joules
- Standard Adult/Pediatric Paddles: Reusable external adult paddles (pediatric paddles integrated)

#### ■ Battery Description

- Standard Type: Li-ion battery Li1104c 11.1Vdc 4000mAh X2
- Standard Capacity: Up to 10 hours ECG monitoring or 60 full-energy discharges.
- Low Battery Indicator: Flashing low battery icon on display and Bat Indicator on the panel of defibrillator be on
- Recharge Rate: 80% in 3 hours. 100% in 5 hours.

#### ■ Built-in Recorder

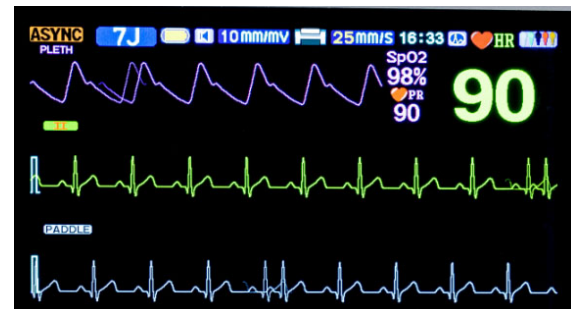
- Paper: 50mm thermal.
- Printing Method: High-resolution, thermal print head.
- Record date, time, sweep speed, waveform gain, heart rate, energy (joule) and ECG waveform
- Print mode
  - ☐ HR exceed limits alarm recording
  - ☐ Auto timed recording
  - ☐ Real-Time Recording
  - ☐ Defibrillation discharge trigger recording

#### ■ Power

- AC-DC dual-use: Use the batteries, AC100V~240V, 50/60 Hz.
- Vehicle Voltage (Option): DC 12V

#### ■ Main unit:

- Portable
- Maximum power 600W
- Dimensions: L320xW205xH410
- Weight: 7.5kg



#### ■ Pulse Oximeter (Optional)

- Display: SpO2 value, waveform, Pulse
- Probe: Standard adult finger clip
- Range: 0-99% for adult, pediatric and neonatal patients

#### ■ AED (Optional)

- Voice prompts and screen prompts.
- Energy Programmable Sequence:
  - 200, 300, 360 Joules;
  - 150, 150, 200 Joules;
  - 50, 75, 100 Joules;
  - 30, 30, 50 Joules;
- Discharge Control: Control on device front panel.

